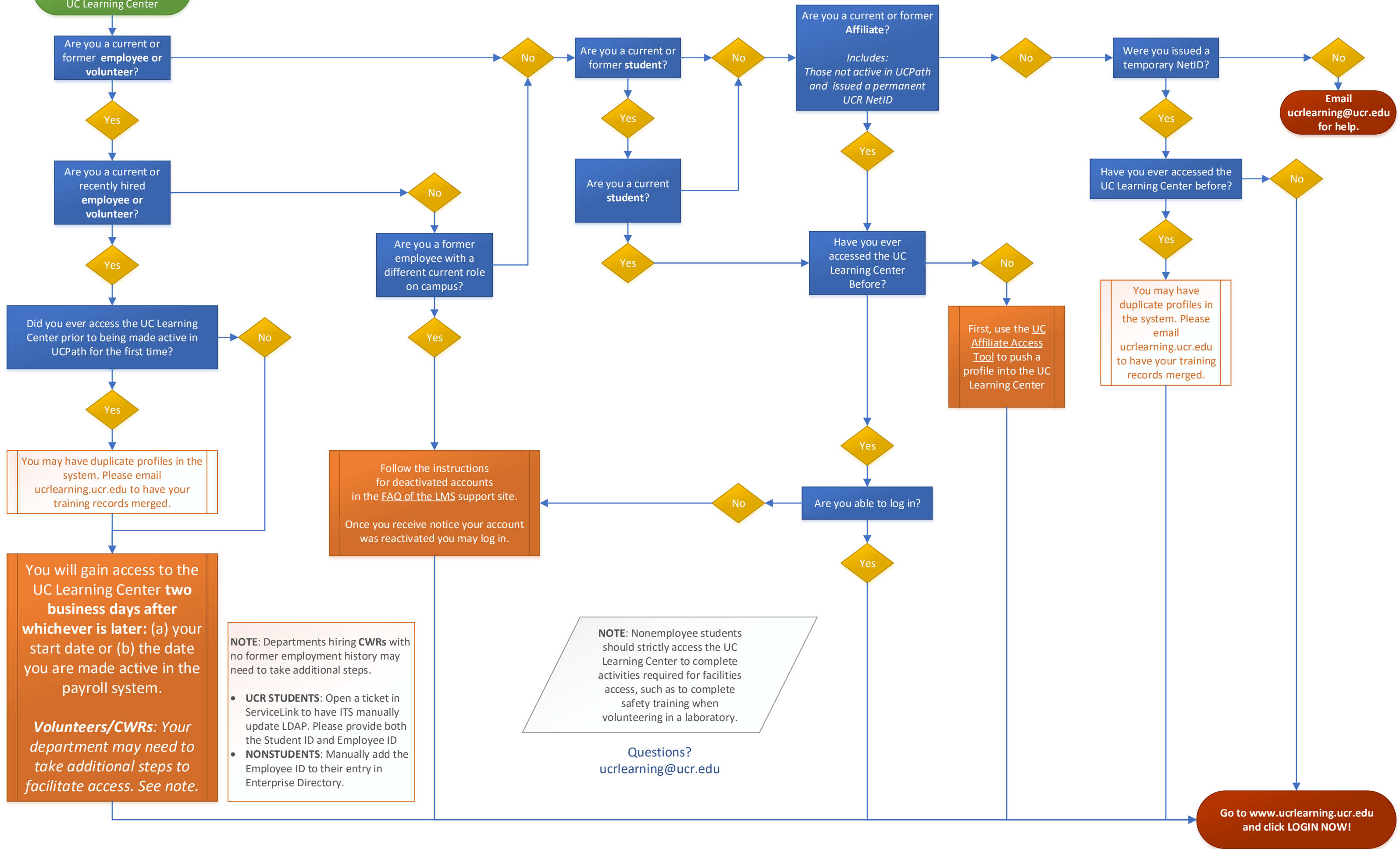


UC LEARNING CENTER — USER ACCESS PATHS

START WITH A UCR NETID:
Find your path to accessing the UC Learning Center



NOTE: Departments hiring **CWRs** with no former employment history may need to take additional steps.

- UCR STUDENTS:** Open a ticket in ServiceLink to have ITS manually update LDAP. Please provide both the Student ID and Employee ID
- NONSTUDENTS:** Manually add the Employee ID to their entry in Enterprise Directory.

NOTE: Nonemployee students should strictly access the UC Learning Center to complete activities required for facilities access, such as to complete safety training when volunteering in a laboratory.

Questions?
ucrlearning@ucr.edu

You will gain access to the UC Learning Center **two business days after whichever is later:** (a) your start date or (b) the date you are made active in the payroll system.

Volunteers/CWRs: Your department may need to take additional steps to facilitate access. See note.

Go to www.ucrlearning.ucr.edu and click **LOGIN NOW!**